



Quinville Abbey  
Quin, County Clare, Ireland

[savills.ie](https://www.savills.ie)

**Costelloe**  
Estate Agents | Valuers | Surveyors  
**065 6821299**  
[www.costelloe.com](https://www.costelloe.com)

**savills**







# Quinville Abbey

## Quin, County Clare

Quinville Abbey is a fine and gracious period country residence dating from the 1700's. The house comprises three stories over garden level of approx. 9,000 sq.ft. of luxury accommodation. The setting of Quinville Abbey at the end of a long gravelled avenue, in delightfully mature pleasure grounds, ensures privacy for the house and walled garden. The surrounding land is renowned for beef fattening quality. It is laid out in seven walled paddocks, with extensive road frontage and is beautifully complemented with mature hardwood trees. Quinville Abbey and approximately 47 acres may be purchased in one lot. Alternatively the house and immediate 12 acres may be purchased separately.

### Location

Situated outside the picturesque and popular village of Quin, Quinville Abbey is only a short 15 minute drive from Shannon International Airport and is within easy reach of the primary motorway routes to Limerick, Cork and Galway and Dublin.

Ennis	8km
Limerick	26km
Shannon (airport)	12km
Galway city	71km
Dublin (airport)	246km
Burren National Park	33km
Athlone	121km
Cork city	133km

### Description

Quinville Abbey is one of the finest period residences in the West of Ireland. It enjoys a tranquil pastoral setting. It is convenient to Ennis, Shannon, Galway and by motorway to Dublin.



Steeped in history, Quinville Abbey was originally built by the Singleton Family as a Georgian residence. In 1828, it was re-constructed to its present Neo Gothic form by the Pain Brothers, whose other works include the nearby Dromoland Castle. Mary Singleton, a daughter of the house, was mother of John Singleton Copley, the famed American portrait artist who himself stayed in the house on many occasions. The house was completely refurbished in 1999/2000.

Internally, the unique design ensures that all rooms have a south/south west aspect, with expansive views of the gardens. The accommodation comprises rooms with fine tall sash windows. A limestone floor and stepped entrance leads to pleasant airy rooms of generous proportions with ornate plasterwork throughout and many other characteristic features such as architraves and impressive chimneypieces.

### The House Quinville Abbey

#### Entrance Floor.

Entrance porch: Limestone floor and steps. 2.93m x 2.85m (9'7" x 9'4")

Reception hall: With original hardwood staircase. 6.62m x 5.73m (21'8" x 18'9")

Cloakroom: Tiled floor. W.C, wash basin and cloaks cupboard. 3.25m x 1.85m (10'7" x 6'0").

Library: Octagonal room with bay window, black Georgian fireplace and three sets of bookcases. 5.72 m x 4.46m (18'9" x 14'7"); Door through to:

Drawing room: White marble fireplace with Georgian grate; centre rose and cornice; 8.29m x 5.13m (27'2" x 16'9"); door through to:

Dining room: Centre rose, cornice and bay window. Black marble fireplace and Georgian grate. 8.72m x 5.76m (28'7" x 18'10")

Rear corridor: 8.31m x 1.53m (27'3" x 5'0")

### First Floor

Bedroom 1: bay window 5.92m x 5.61m (19'5" x 18'4")

En-suite bathroom with Italian marble tiled floor, w.c., w.h.b., shower/bath, bidet 2.58m x 2.9m (8'5" x 9'2").

Bedroom 2: 5.16m x 5.18m (16'11" x 16'12").

En-suite bathroom with Italian marble tiled floor, w.c., w.h.b., shower/bath 2.81m x 2.57m (9'2" x 8'5").

Bedroom 3 (Master Bedroom): with bay window 4.56m x 5.67m (14'11" x 18'7"), dressing room 2.88m x 2.62m (9'5" x 8'7"),

En-suite bathroom with Italian marble tiled floor, w.c., w.h.b., bath, bidet 3.84m x 3.94m (12'7" x 12'11").

Hotpress: Shelved

### Second floor

Bedroom 4: Built in Wardrobe 5.59m x 5.89m (18'3" x 19'3").

En-suite bathroom with Italian marble tiled floor, w.c., w.h.b., shower, bath, bidet 2.53m x 3.7m (8'3" x 12'4").

Bedroom 5: Built in Wardrobe 5m x 5.1m (16'7" x 17').

En-suite bathroom with Italian marble tiled floor, w.c., twin w.h.b., shower, bath 4.92m x 2.65m (16'1" x 8'7").

Bedroom 6: Built in Wardrobe 5.6m x 4.4m (18'5" x 14'5").

En-suite bathroom with Italian marble tiled floor, w.c., w.h.b., shower 1.77m x 2.75m (5'8" x 9').

Bedroom 7: Built in Wardrobe 3.06m x 5.64m (10' x 18'5").

En-suite bathroom with Italian marble tiled floor, w.c., w.h.b., shower 2.73m x 1.83m (9' x 6').

### Garden level

Kitchen: Fully fitted solid wood painted kitchen, granite worktop, double sink, centre island with sink unit and worktop, 4 door Aga and hob 4.98m x 8.12m (16'3" x 16'6").

Breakfast room: 5.6m x 4.33m (18'4" x 14'2").

Living room: Vaulted ceiling, large open fireplace with solid fuel burning stove

Utility room: Flagged floor, plumbed and shelved 3.45m x 2.83m (11'3" x 9'3").

Office/Den: 5.73 x 5.32m (18'8" x 17'5").

### Courtyard

Range of unused single storey and lofted coach houses, garages and stores.

Boiler house with oil fuel boiler and pumps for central heating.

### Gate lodge

Entrance Porch, Kitchen, Sitting room with open fire place, separate dining area, bedroom, bathroom, utility, garage.

### Grounds:

Quinville Abbey enjoys a central and private position within delightful pleasure grounds. The house is approached through attractive entrance gates, past the recently redecorated original

gate lodge and along the tree lined avenue to a large forecourt area in front of the house. The standard of Quinville Abbey is further exemplified by its stunning gardens which feature orchard, mature shrubbery, rose beds, pond, greenhouse and garden sheds.

The lands are laid out in seven walled paddocks, all in grass and enjoy good frontage onto the country road.

### County Clare:

From the majestic Cliffs of Moher, through the lunar landscape of the Burren and on by Ireland's largest pleasure lake, Lough Derg and then back to the wonderful seascape of West Clare; Co Clare is a haven of national treasures and scenic surroundings. In the middle and east of the county, you will find a patchwork of fishing lakes teeming with game and coarse fish; to the north and west you will find magnificent resorts and beaches all along the Atlantic Ocean coastline. So if it's walking, cruising, golfing, eating out, fishing, horse riding, flying, surfing, dolphin watching or just enjoying the music in the local village pub - County Clare has it all.

### Solicitors with Carriage of Sale

Houlihan Burke & Co., Solicitors

First Floor Salthouse Lane,

Ennis, Co Clare

Ref: Sean Coffey,

T. +353 (0)65 6842244

E.scoffey@houlihanburke.ie

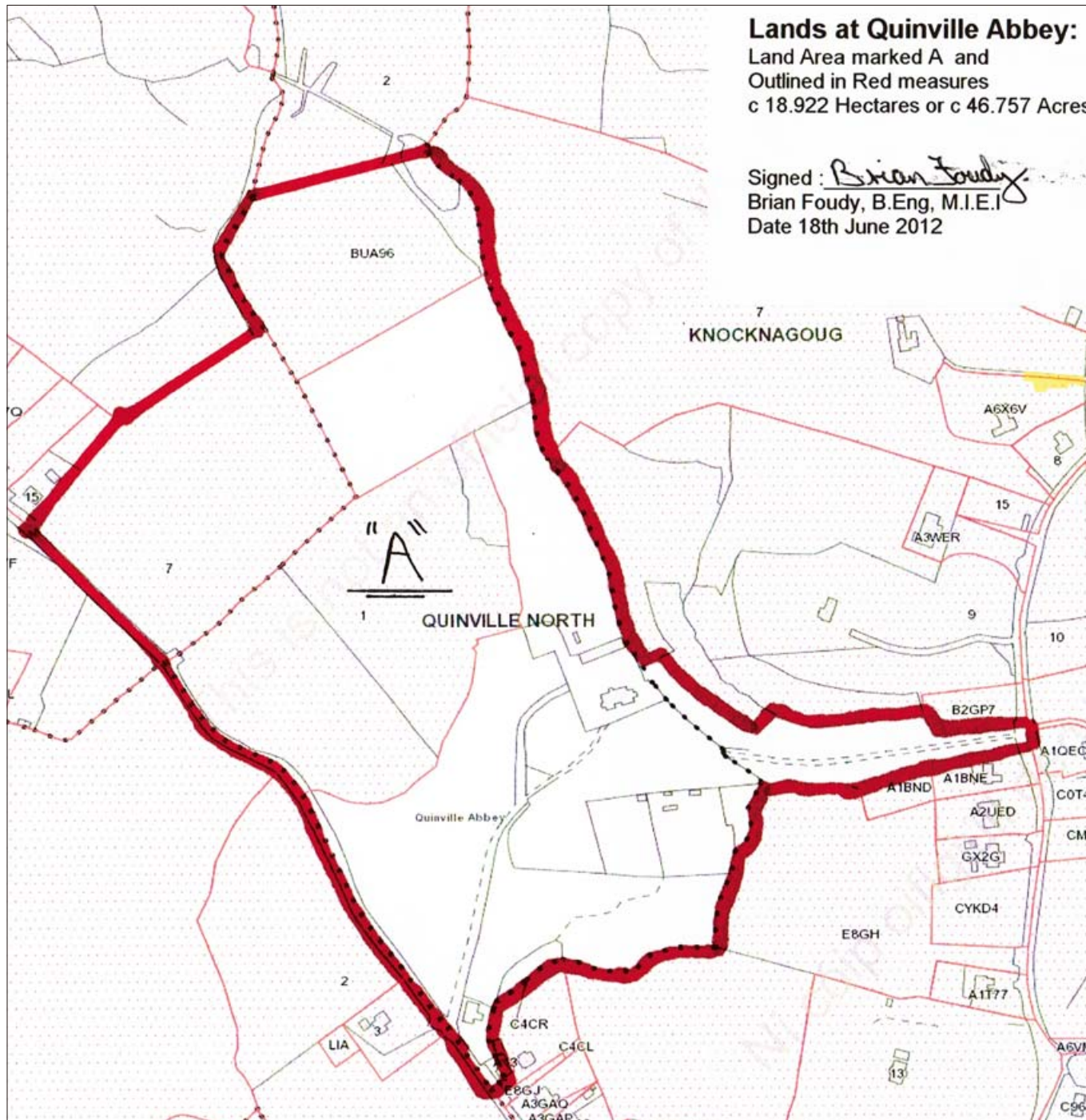




### Lands at Quinville Abbey:

Land Area marked A and  
Outlined in Red measures  
c 18.922 Hectares or c 46.757 Acres

Signed: *Brian Foudy*  
Brian Foudy, B.Eng, M.I.E.I  
Date 18th June 2012







## Fixtures & Fittings

All fitted carpets, curtains & light fittings are included in the sale.

## Viewing

Strictly by appointment with  
Pat O' Hagan, Savills, 016634358 or  
David Costelloe of Costelloe Estate Agents, 065 6821299

## How to get there?

From the M 18 motorway Galway/ Ennis/ Limerick exit at junction 11. Proceed approx 4km to Quin Village. On entering Quin Village, keep left on Main Street, proceed out the Ennis Road (R469) and Quinville Abbey is located 400 meters on the right hand side.

## Tenure

Freehold

## Protected Status & Planning

Quinville Abbey is a protected structure as defined under part IV of the Planning and Development Act 2000. Reference RPS058 in the record of protected structures of Clare County Council.











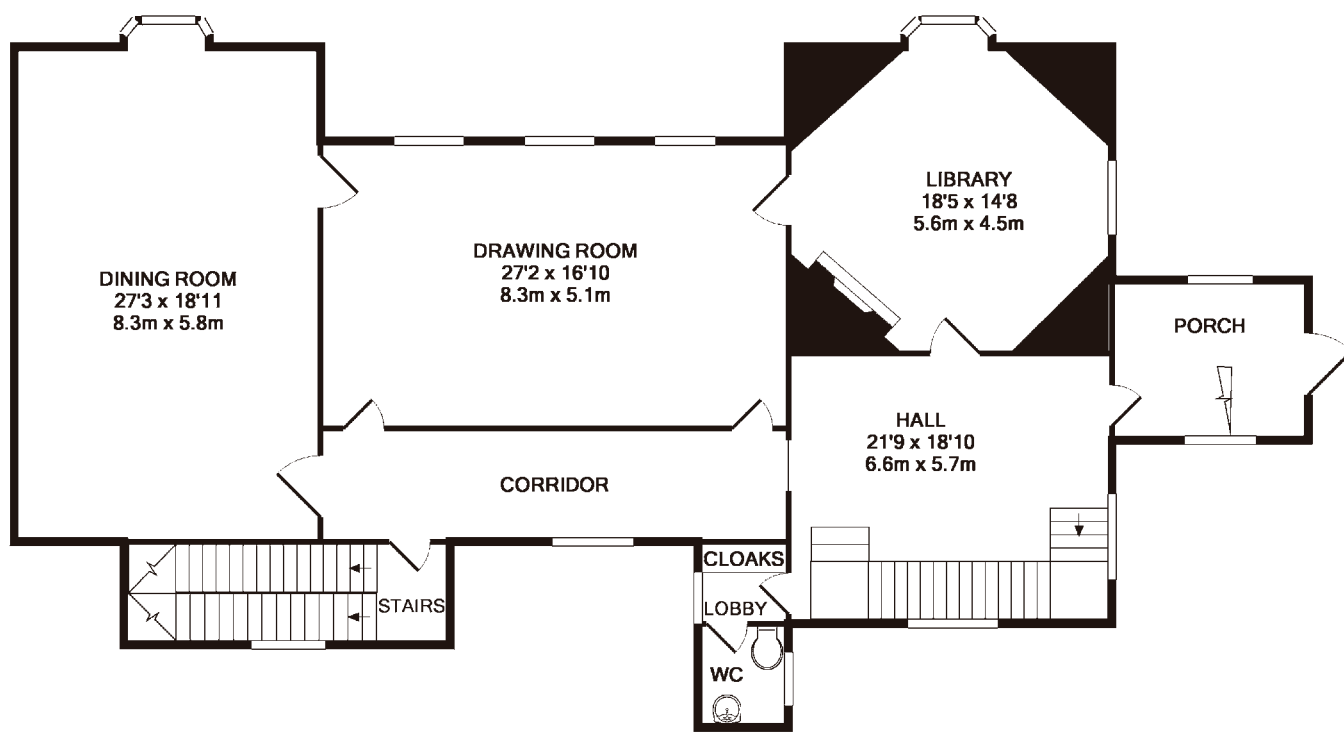
**savills**

Savills Country  
32 Molesworth Street,  
Dublin 2  
country@savills.ie  
**+353 (0)1 6634350**

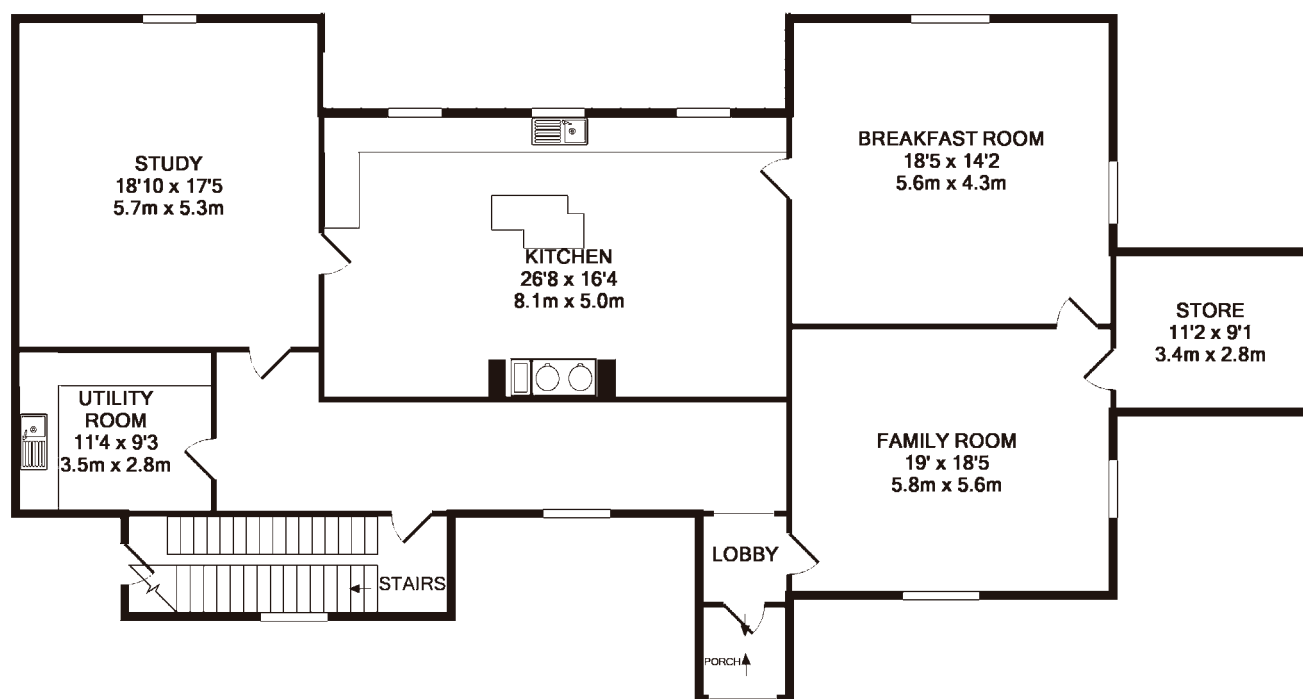


**Important Notice:** Savills, their clients and any joint agents give notice that: 1: They have no authority to make or give any representations or warranties in relation to the property. These particulars do not form part of any offer or contract and must not be relied upon as statements or representations of fact. 2: Any areas, measurements or distances are approximate. The text, photographs and plans are for guidance only and are not necessarily comprehensive. It should not be assumed that the property has all necessary planning, building regulation or other consents and Savills have not tested any services, equipment or facilities. Purchasers must satisfy themselves by inspection or otherwise. 3: All maps produced by permission of the Ordnance Survey Ireland License No AU0001703 (copyright symbol see old disclaimer) Government of Ireland





ENTRANCE FLOOR



GARDEN LEVEL

For identification purposes only, not to scale, garden level floor plan available on request.

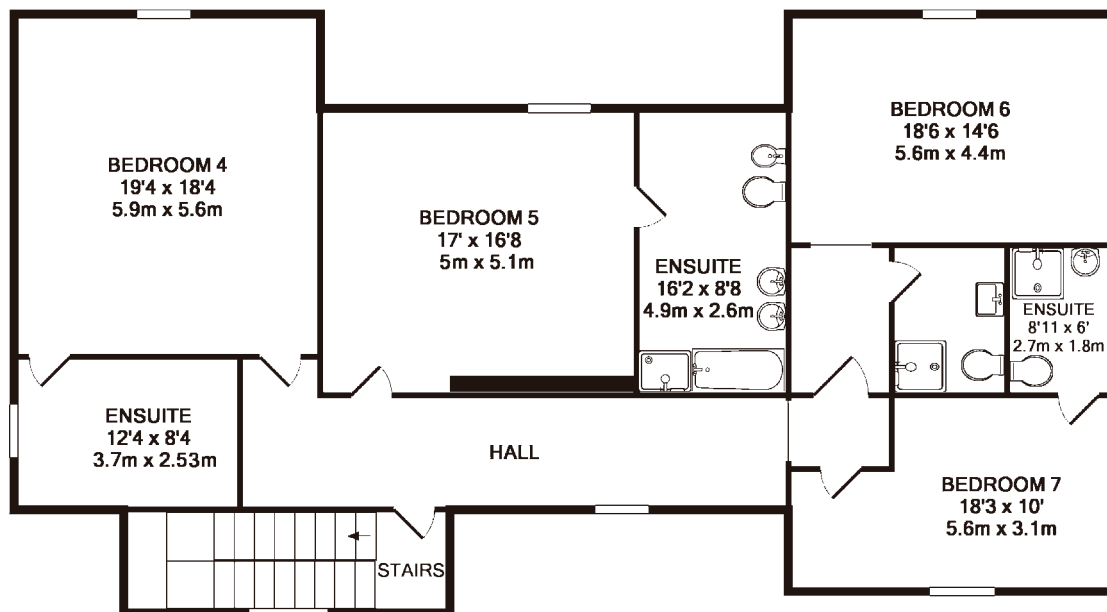
Quinville Abbey  
Quin, County Clare, Ireland

savills.ie

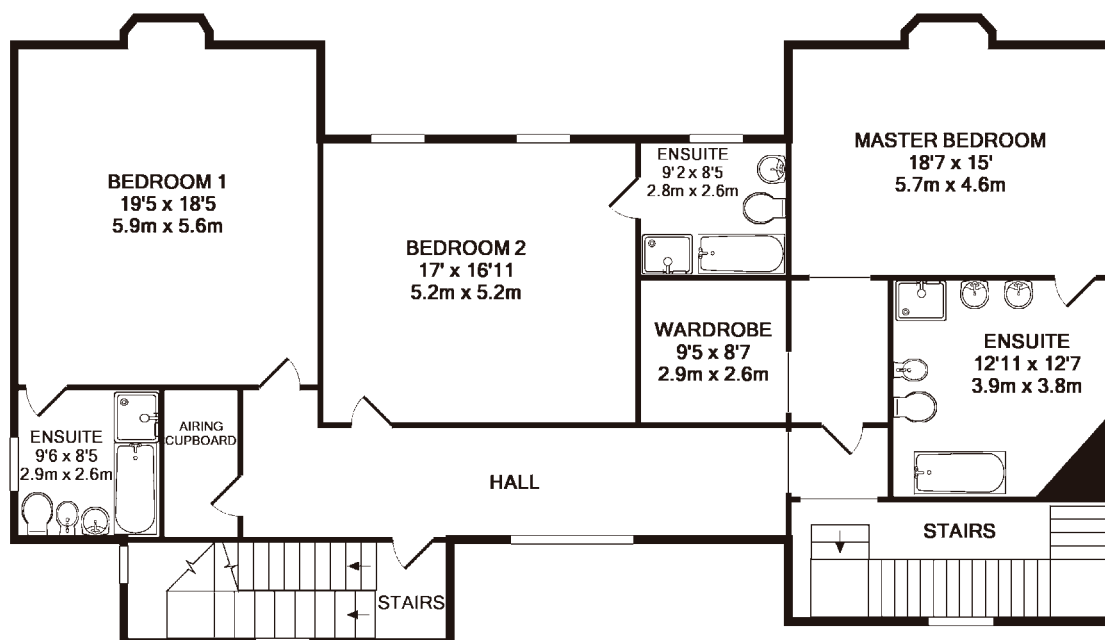
**Costelloe**  
Estate Agents | Valuers | Surveyors  
**065 6821299**  
www.costelloe.com

**savills**





2ND FLOOR



1ST FLOOR

